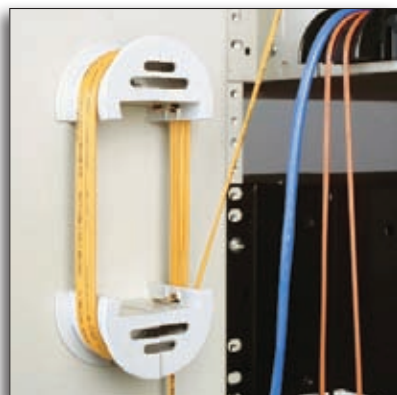


# Fast-Drop™

## Fiber Bend Radius Control Module

Fast-Drop Fiber Bend Radius Control Modules provide the BICSI recommended minimum bend radius for fiber optic cables, assuring consistent data transmission. The Fast-Drop is molded of UL94 V-0 flame retardant, impact resistant polycarbonate and is rigid enough to withstand large bundle loads. NEBS compliant.

The universal Fast-Drop quickly snaps on to any panel edge up to 0.104" (2.7mm), retained by a RoHS compliant plated steel slip. It also may be screw or tab mounted to the cabinet to make service loops. Cables are easily contained with the use of our hook and loop strap. Available from stock in three containment widths: 1" (2.5cm), 1.75" (4.4cm), and 3" (7.6cm), in black or beige. Slotted side design allows for easy screw and/or stacking attachment



**Service Loop/Take-up Reel  
(Plate Mounting)**



**Patch Panel Egress  
(Clip Mounting)**



**Fiber Bend Module  
(Rail Mounting)**

### Features and Benefits:

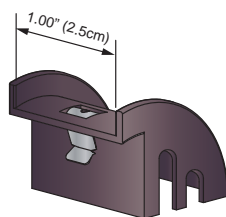
- Fast assembly without adhesives
- Contain and manage cables
- Protects cables from kinks
- Service loops mounting
- Fits within standard unit racks
- Snaps into place
- Impact resistant
- Hook and loop strap containment option
- Flame retardant per UL94 V-0
- RoHS compliant
- Three sizes, two colors
- Available from stock

### Applications:

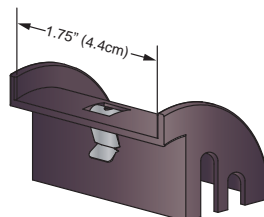
- FTTH or FTTP cabling
- Patch panels, control boxes, racks, cabinets, and enclosures
- Data centers/central offices
- Telecom switches and base stations
- Medical, x-ray, and imaging equipment
- Industrial equipment

### Uses:

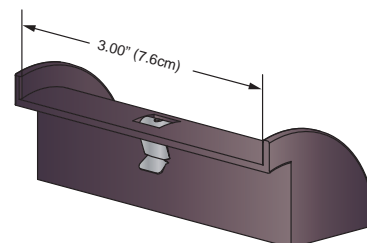
- Fiber and copper cables
- Electrical wiring
- Pneumatic and fluid tubing
- Hydraulic hoses



**321-1**



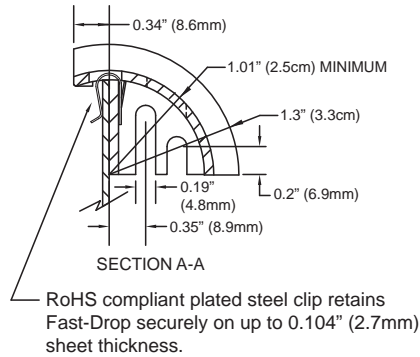
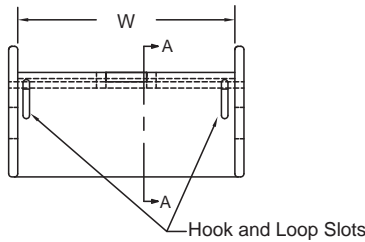
**321-2**



**321-3**

### Fast-Drop Specifications and Ordering Options

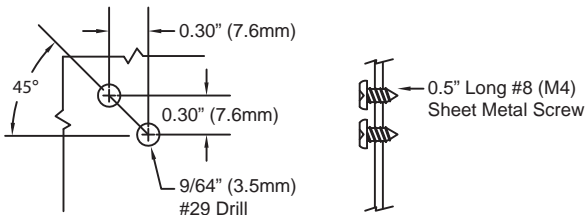
#### Specifications:



<b>Material:</b>	<b>Polycarbonate</b>
<b>Flammability:</b>	<b>UL94 V-0</b>
<b>Color:</b>	<b>Black or Beige</b>
<b>Typical Wall Thickness:</b>	<b>0.090" (2.3mm)</b>

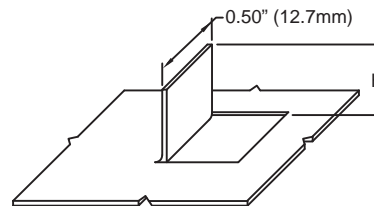
#### Mounting Options:

##### Side Screw Mounting



Drill one hole per drill pattern above. Insert first screw and mount Fast-Drop. Use Open slot to spot and drill the second hole and insert second screw.

##### Vertical Tab Mounting



P/N	H
321-1	0.94" (2.4mm)
321-2	1.34" (3.4mm)
321-3	1.94" (4.9mm)

Optional: Include slot tab to lock clip in place.

#### Part Numbers and Sizes:

Part #	Color	W Max Bundle Width		Overall Width	
		Inches	cm	Inches	cm
321-1A	Black	1.00	2.5	1.18	2.96
321-1B	Beige				
321-2A	Black	1.75	4.4	1.93	4.86
321-2B	Beige				
321-3A*	Black	3.00	7.6	3.18	8.06
321-3B*	Beige				

For Hook and Loop Straps add -HL to part number suffix (i.e. 321-1A-HL)

\*3.00" Fast-Drop has no screw mounting slots